



# College Bulletin: W/C Mon 13<sup>th</sup> & 20<sup>th</sup> Jan

## INCLUSION FOCUS FILM

**ONE LIFE** is the true story of Sir Nicholas 'Nicky' Winton, a young London broker played by Anthony Hopkins, who, in the months leading up to World War II, rescued 669 predominantly Jewish children by finding families for them to live with in England. How many children could he and the team rescue before the borders closed?

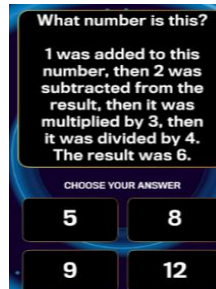


## THOUGHT OF THE WEEK

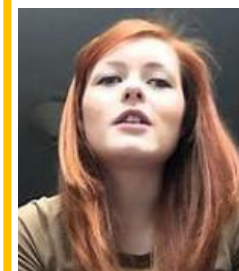


## 1% Club Question of the day

30% Question



## ROLE MODEL OF THE FORTNIGHT



24-year-old **LUCY EDWARDS** is a thriving social media influencer who doesn't let her blindness hinder her way to success. While talking to the BBC, Lucy explained how she thought about her dreams to be far fetched but never gave up on them. With a massive following on different social media platforms Lucy has a thriving career in the media. See here for more info: [lives of legally blind](#)

## WELLBEING SUPPORT

Bedford Borough Wellbeing Hub

[https://localoffer.bedford.gov.uk/kb5/bedford/directory/site.page?id=R\\_ScQflCIWk](https://localoffer.bedford.gov.uk/kb5/bedford/directory/site.page?id=R_ScQflCIWk)

Mental Health & Anxiety

[www.calmharm.co.uk](http://www.calmharm.co.uk) [www.clearfear.co.uk](http://www.clearfear.co.uk) [www.kooth.com](http://www.kooth.com)

Gender Identity/Sexual Orientation

[www.theproudtrust.org](http://www.theproudtrust.org)

Bereavement

[www.cruse.org.uk](http://www.cruse.org.uk) [www.winstonswish.org](http://www.winstonswish.org)

Staying Safe Online

[https://www.thinkuknow.co.uk/14\\_plus/](https://www.thinkuknow.co.uk/14_plus/)

Eating Disorders

[www.beateatingdisorders.org.uk](http://www.beateatingdisorders.org.uk)

Substance Misuse Support

<https://aquarius.org.uk/>

**REMINDER:** Our Student Health Guide can be found here:

[Student Welfare](#) | [kimberleycollege](#)



## KEY DATES/ REMINDERS:

**Mon 13<sup>th</sup> Jan:** BTEC Exams take place this week.

**Wed 15<sup>th</sup> Jan:** Girls Football Training at WUS: 3-5pm (Please message Mrs Genders on Teams if you want to take part).

**Tues 21<sup>st</sup> Jan:** UCAS CEO Dr Jo Saxton Presentation to KEEP students in the Lecture Theatre: 2.10pm – 2.50pm

**Fri 24<sup>th</sup> Jan:** Y13 Prom £5 Deposit Deadline

**Wed 29<sup>th</sup> Jan:** UCAS Equal Consideration Deadline 6pm All Y13 students must keep monitoring their college emails for communication with Mrs Stewart

**Mon 3<sup>rd</sup> Feb:** Y12 Geography Trip departs

**Fri 14<sup>th</sup> Feb:** Break up for half term (Return Mon 24<sup>th</sup> Feb).

**W/C: Mon 24<sup>th</sup> Feb & Mon 3<sup>rd</sup> Mar:** Y13 Mocks

**W/C Mon 17<sup>th</sup> Mar:** Y12 Mocks

## CELEBRATING THE STEPPING STONES TO SUCCESS

**Outstanding Attitude to Learning**

**Y12:** Alaina M, Matthew N, Mea C, Isla E, Zara G, Isabella K, Amelia P & Goncalo R

**Y13:** Harrison L, Keeley B, Clara d R, Fraser E, Isabelle H & Sarah M V.

**Excellent HW/ IS Work**

**Y12:** Julia B, Leon C & Harini K

**Y13:** Jannah A, Abi B & Ruby-Ann D

**Enrichment**

Well done to Tristan G, Amanjot R, Alexander B, Lola S & Mathilda G for successfully completing the GCHQ Christmas Challenge!!!



## KEY COLLEGE CONTACT DETAILS

**Safeguarding:** [safeguarding@wootton.beds.sch.uk](mailto:safeguarding@wootton.beds.sch.uk)

**Pastoral:** [kimberleypastoral@wootton.beds.sch.uk](mailto:kimberleypastoral@wootton.beds.sch.uk)

**Attendance:** [6formattendance@wootton.beds.sch.uk](mailto:6formattendance@wootton.beds.sch.uk)

**Bursary:** [bursary@wootton.beds.sch.uk](mailto:bursary@wootton.beds.sch.uk)

**ANONYMOUS RERPORTING SYSTEM: SELF-REFERRAL FOR SUPPORT:**

<https://forms.office.com/r/ADxircgSWf>

<https://forms.office.com/e/hkK8RggG7g>

## EQUALITY, DIVERSITY & INCLUSION CALENDAR:

January is Cervical Cancer Awareness Month

4<sup>th</sup> Jan: World Braille Day

7<sup>th</sup> Jan: Mahayana Day

15<sup>th</sup> Jan: World Religion Day

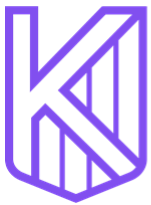
22<sup>nd</sup> Jan: Lunar New Year

27<sup>th</sup> Jan: Holocaust Memorial day



## TUTOR SESSIONS in the Lecture Theatre

	Year 13	Year 12
<b>(W1)</b> w/c 13/01/25	Double Guided Study	
<b>(W2)</b> w/c 20/01/25		Next Steps Launch



Kimberley  
Sixth Form

# College Bulletin: W/C Mon 13<sup>th</sup> & 20<sup>th</sup> Jan

## Y13 PROM

**DATE:** Friday 11<sup>th</sup> July

**VENUE:** Bedford Rugby Club

The cost of the ticket will be £30 approx. (this includes venue hire, DJ, Security and food) Full price will be confirmed once we know numbers.

(The more that attend – the cheaper the ticket!!)

**Please pay your £5 deposit on Wisepay by Friday 24<sup>th</sup> January:**

<https://www.wisepay.co.uk/store/generic/template.asp?mID=97624&ACT=nav>

## Student Focus - Punctuality & Organisation

### Punctuality reminders:

Please ensure you arrive to college with enough time to be in your lesson for 8.30am or 11.30am (*We are aware that if you travel by public transport – sometimes this is out of your control*).

- If you are on break or lunch, please leave 3 mins before the end to ensure you are back in your classrooms for 10.10am / 10.30am or 1.40pm
- Please ensure you go to the bathroom during your break / lunch – not at the end on the way back to your lesson.

### Organisation Reminders:

- Students should be arriving to lessons ready to learn with the correct equipment and resources for your subject area.
- This includes organised folders with notes (These can be on Teams)
- It also includes having the relevant subject textbooks.

**Punctuality & Organisation is being monitored closely on ClassCharts.**



## Student Focus - Silent Independent Study

- If you are working in these areas – you should be doing so silently and independently. (One student to one desk).
- **Reminder – if you have been asked to undertake Independent Study onsite as part of our Intervention strategy – you must register your attendance at the attendance office (1n22).**
- Please do not rearrange the chairs or desks – they must stay as they are from the start of the day to the end of the day.
- If you choose to have your break or lunch in these areas – you should still be sitting one to a desk, if you turn a chair round to eat opposite a friend – please make sure it is replaced back to its original spot
- **(Remember no hot food upstairs)**

