

INCLUSION FOCUS FILM:



Last Christmas – Written and produced by Emma Thompson, who has had a history of depression for most of her life. Thompson also plays a character in the film, who also has chronic depression in the film due to trauma experienced during the Yugoslav Wars. The main plot of the film centres around a typical Christmas romance (with a twist ending), the added layer surrounding depression – plays an important role in helping to normalise the stigma surrounding mental health conditions.

THOUGHT / QUOTE OF THE WEEK



ROLE MODEL OF THE FORTNIGHT



Magic Johnson was diagnosed with HIV during a routine physical examination from the NBA ahead of the 1991/2 season. He went on to attack the HIV stigma with passion, launching the Magic Johnson Foundation to raise awareness, then pushing Congress and the White House to spend money to fight the disease. He said "It helped people who were living with not just HIV and AIDS, but with any disease, that you can live on, you can be — live a productive life."

WELLBEING SUPPORT

Bedford Borough Wellbeing Hub

https://localoffer.bedford.gov.uk/kb5/bedford/directory/site.page?id=R_ScQfCiWk

Mental Health & Anxiety

www.calmharm.co.uk www.clearfear.co.uk www.kooth.com

Gender Identity/Sexual Orientation

www.theproudtrust.org

Bereavement

www.cruse.org.uk www.winstonswish.org

Staying Safe Online

https://www.thinkuknow.co.uk/14_plus/

Eating Disorders

www.beateatingdisorders.org.uk

Staying Safe Online

https://www.thinkuknow.co.uk/14_plus/

Substance Misuse Support

<https://aquarius.org.uk/>

REMINDER:

Our Student Health Guide can be found on our college website here: [Student Welfare | kimberleycollege](#)



KEY DATES/ REMINDERS:

Mon 4th Dec: Ready2Lead Group 2 External meeting 2-3pm

Wed 6th Dec: Ready2Lead Networking and Celebration Event at Kimberley College: 5.30pm – 8.30pm

Fri 8th Dec: Xmas Jumper/ Xmas Dinner & Media Xmas Show – see slide 2 for more details

Mon 11th Dec: Girls football match at Stratton. Meet at 2.30pm in reception.

Tues 12th December: Kimberley Alumni Event at college

Wed 13th – Fri 15th Dec: Sister Act the Musical at Wootton Upper School.

Tuesday 19th Dec: Last Day of Term – 12.30pm Close.

There will be NO PM LESSON on this day, teachers will set work on Teams and will be available for support on Teams between 11/30-12.30pm

Thurs 4th Jan 2024: Return to College

TUTOR SESSIONS

	Y12 PM Session	Y13 PM Session
W/C 04th Dec 2023	Exam stress & revision techniques & Student Survey – 2n Events Area	
W/C 11th Dec 2023		Pregnancy & fertility & Student survey.

CELEBRATING STEPPING STONES TO SUCCESS



Outstanding Attitude to Learning

Y12: Fraser E, Colette F, Oscar G, Isabelle H, Harrison L & Sarah MV

Y13: Jake D, Stephanie O & Emanuela O

Outstanding Homework/ Coursework

Y12: Heidi N, Alexandra S & Summer W

Y13: Asya A & Naina A

Enrichment

A huge Congratulations to Thomas OH, Adam F, Sadan M, Ruby-Ann D, Zaccaria M, Ava L, Bogdan T, Kaitlin L, Evelyn W, Milena B, Verity HI, Tom OM, Daisy N, Sienna J, Zainab K, Leah W & Tristan B for becoming Regional Champions of the Bar Mock Trials in Oxford! They will go on to compete in the National Finals in March. What an amazing achievement!! ☺

KEY COLLEGE CONTACT DETAILS

Safeguarding: safeguarding@wootton.beds.sch.uk

Pastoral: kimberleypastoral@wootton.beds.sch.uk

Attendance: 6formattendance@wootton.beds.sch.uk

Bursary: bursary@wootton.beds.sch.uk

Anonymous reporting for Bullying/ Discrimination:

<https://forms.office.com/r/ADxircgSWf>

EQUALITY, DIVERSITY & INCLUSION CALENDAR:

DECEMBER IS: DISABILITY AWARENESS MONTH

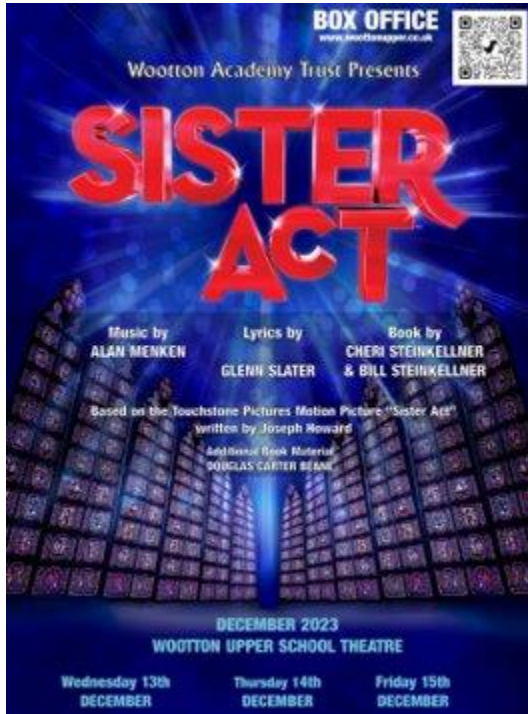
4th Dec – International day of persons with Disabilities

7th – 15th Dec – Hanukkah

10th Dec – Human rights day

25th Dec – Christmas Day





Book your
Tickets
here:

<https://www.eventbrite.co.uk/organization/wootton-academy-trust-48519444183>

Friday 8th December: Kimberley Christmas Celebrations

- Christmas Jumper Day – dig out your jazziest Christmas Jumper or wear something Christmassy and donate £2 to Save the Children here: [Kimberley College part of Wootton Academy Trust is fundraising for Save the Children \(justgiving.com\)](https://www.justgiving.com)



- £10 Amazon Voucher for the best Christmassy Dressed Student!!
- A free 'COSTA Drink' for the best Christmassy dressed member of staff!
 - Christmas Dinner Menu (On next slide): 12.30pm – 1.30pm
- 'Fairytale of Kimberley' LIVE Media Show 1.30pm – 2.45pm – All students watch in their PM lesson. Link here for those that want to watch it at home: https://www.youtube.com/watch?v=VFRYhPXEM_g

REMINDER: Lunchtime Board games club in the well-being room/ 1n20:

Wednesday Lunchtimes!

Come along, enjoy a game of cards/ chess/ board game and meet new people 😊

If anyone has any games they would like to donate or lend to the college please bring them in!!

Kimberley Christmas Dinner

Friday 8th December 12.30pm - 1.30pm

Don't forget to wear your Christmas
Jumper or something Christmassy 😊

caterlink
feeding the imagination

KIMBERLY COLLEGE GRAB AND GO CHRISTMAS EDITION

CHRISTMAS LOADED WRAP: £3.30
PIG IN THE BLANKET SUB BAGUETTE: £3.30
FESTIVE BURGER: £3.30
FESTIVE CHIPS BAG; £1.70
YORKSHIRE VEG WRAP ;£3.30

KIMBERLY COLLEGE CHRISTMAS DINNER

TRADITIONAL CHRISTMAS DINNER

(ROAST TURKEY WITH ROAST POTATOES, YORKSHIRE
PUDDINGS, PEAS, CARROTS AND GRAVY WITH
CRANBERRY SAUCE)

SMALL £3.30 LARGE £5

VEGETARIAN OPTION:

CAULIFLOWER CHEESE, POTATOES, YORKSHIRE
PUDDINGS, PEAS, CARROTS, AND GRAVY WITH
CRANBERRY SAUCE SMALL £3.30 LARGE £5

DESSERTS

.GINGERBREAD MEN £1.30
.TREE CUPCAKES £1.50
.CANDY CANE BROWNIE £1.80
.GLUTEN FREE BROWNIE £1.90





Kimberley College - Y13 Subject Support Sessions



ART & DESIGN	BIOLOGY	BUSINESS (ALL)	CHEMISTRY	COMPUTER SCIENCE	DANCE
Breaktime Support N/A	Breaktime Support N/A	Breaktime Support Wed – Business Room	Breaktime Support Drop-in Support	Breaktime Support Drop-in Support 1N10/11	Breaktime Support N/A
Lunchtime Support Wed & Fri in A1 at WUS	Lunchtime Support Mon & Wed in 2n14	Lunchtime Support Drop-in Support	Lunchtime Support Monday in 2n17	Lunchtime Support Drop-in Support 1N10/11	Lunchtime Support N/A
After College Support Wed 3-4.30pm in A1	After College Support N/A	After College Support Wednesdays in 1s06	After College Support N/A	After College Support Thursdays 3-4pm 1n10/11	After College Support Mon & Thurs 3-5pm
DRAMA	ECONOMICS	ENGINEERING	ENGLISH (ALL)	FILM STUDIES	FURTHER MATHS
Breaktime Support N/A	Breaktime Support Drop-in Support	Breaktime Support Drop-in Support	Breaktime Support Drop-in Support	Breaktime Support N/A	Breaktime Support N/A
Lunchtime Support N/A	Lunchtime Support Drop-in Support	Lunchtime Support Drop-in Support	Lunchtime Support Drop-in Support	Lunchtime Support N/A	Lunchtime Support Mon, Wed & Thurs
After College Support Mon & Thurs 3-5pm	After College Support Tuesdays 3-4pm in 2s05	After College Support Tuesdays 3-4pm in 1n11	After College Support N/A	After College Support Thursdays 3-4pm in 1s14	After College Support N/A
GEOGRAPHY	GOV & POLITICS	GRAPHICS	H&S CARE	HISTORY	LAW
Breaktime Support Wednesdays	Breaktime Support N/A	Breaktime Support Drop-in Support	Breaktime Support N/A	Breaktime Support N/A	Breaktime Support N/A
Lunchtime Support Wednesdays	Lunchtime Support Drop-in Support	Lunchtime Support Drop-in Support	Lunchtime Support Drop-in Support	Lunchtime Support Drop-in Support	Lunchtime Support Thursdays
After College Support W2 Wednesdays in 2s15	After College Support Tuesdays 3-4pm in 1s09	After College Support 3-4.30pm in Gn03/04	After College Support Thursdays 3-4pm in 1n20	After College Support N/A	After College Support N/A
MATHS	MEDIA STUDIES	MUSIC	PHILOSOPHY & ETHICS	PHOTOGRAPHY	PHYSICS
Breaktime Support N/A	Breaktime Support N/A	Breaktime Support N/A	Breaktime Support N/A	Breaktime Support N/A	Breaktime Support W1 Tuesday
Lunchtime Support Mon, Wed & Thurs (Tues Society)	Lunchtime Support Wednesdays	Lunchtime Support Wednesdays	Lunchtime Support N/A	Lunchtime Support Mondays in IT5	Lunchtime Support N/A
After College Support N/A	After College Support Wednesdays 3-4.30pm	After College Support Wednesdays 3-4pm	After College Support Tuesdays 3-4pm	After College Support Wed 3-4.30pm in A1	After College Support N/A
PSYCHOLOGY	SOCIOLOGY	SPANISH	FRENCH	SPORT	TEXTILES
Breaktime Support N/A	Breaktime Support N/A	Breaktime Support Drop-in/ 1to1 Support	Breaktime Support Drop-in/ 1to1 Support	Breaktime Support N/A	Breaktime Support N/A
Lunchtime Support Drop-in Support	Lunchtime Support Drop-in Support	Lunchtime Support Drop-in/ 1to1 Support	Lunchtime Support Wednesday Drop-in Support	Lunchtime Support Mon & Thurs Drop-in	Lunchtime Support Wed P3&P4
After College Support N/A	After College Support N/A	After College Support N/A	After College Support N/A	After College Support Thurs 3-4pm	After College Support Thurs 3-4pm

Parent / Carer Information

Useful links for Parents/ Carers:

December Theme is Supporting Young People in a Mental Health Crisis Parent Session- Wednesday 6th Dec
9.30-10.30am: <https://www.eventbrite.co.uk/myevent?eid=700112825307>

<https://www.mind.org.uk/information-support/tips-for-everyday-living/christmas-and-mental-health/useful-contacts/> - **useful contacts for Mental Health over Christmas**

<https://www.ageuk.org.uk/isleofwight/our-services/support-hub/support-at-christmas/> - **A support hub of all contacts**

<https://bedsdv.org.uk/domestic-abuse-news/> - **DA support Bedford**

<https://bedsdv.org.uk/wp-content/uploads/2022/12/Support-Over-the-Festive-Period-Transcription.htm> - **transcript from a podcast – actual podcast on <https://bedsdv.org.uk/relationships-shouldnt-hurt/>**

<https://www.dvact.org/post/why-does-domestic-violence-increase-over-christmas> - **interesting article**