



**Kimberley
Sixth Form**

**Course Blocks and
Entry Criteria for
Admission in
September 2025**

Kimberley College Entry Criteria for Admission in September 2025

For future progression upon leaving the college, it is important that students are enrolled on a suitable curriculum for their Post-16 studies. To assist students with a selection process we have created a core pathway of A Level subjects and a mixed pathway comprising of A Level and BTEC subjects. For applicants who are offered an interview, we will discuss course choices to make sure that they are cohesive and that they are made based on informed decisions and offer the best opportunity for progression.

Each pathway has its own entry criteria which students must achieve to study subjects in that pathway. Subjects also have specific subject entry criteria, these entry criteria are there to ensure that learners have appropriate skills, knowledge and understanding from previous study at Key Stage 4 to ensure smooth and successful progression at Key Stage 5 and beyond.

Pathways are delimited by the average GCSE points awarded from all awarded grades at the end of Key Stage 4, with the best 8 subjects (including GCSE English and GCSE Mathematics). An average GCSE points score can be calculated by adding all the grades awarded to a learner and dividing by the number of subjects taken i.e. 8. Where a student has taken qualifications other than GCSE, the grade awarded in this subject is converted to a GCSE grade using the equivalence guide provided by the college on our website.

Course Blocks 2025

Indicative maximum class sizes are shown to the right of each subject in the table below.

In line with the majority of Post-16 providers, courses will only run if there is sufficient demand and dependant on the outcome of the national review by the DfE in December 2024. In this eventuality we would notify you and discuss alternative options. Information on courses can be found at www.kimberleycollege.co.uk/courses

Subjects indicated with (W) may be taught at our Wootton site.

Our admissions policy can be found at www.kimberleycollege.co.uk/application-process

Block A		Block B		Block C		Block D		Block E	
Art (W)	20	Biology	24	Business Studies (A Level)	24	Business BTEC Extended Certificate *	24	Biology	24
Biology	24	Business BTEC Diploma **	24	Business BTEC Diploma **	24	Chemistry	24	Chemistry	24
Chemistry	24	Creative Media BTEC Diploma **	22	Computer Science	18	Creative Media BTEC Diploma **	22	Dance (W)	18
Engineering BTEC Extended Certificate *	22	Further Maths (including Maths)	24	English Language & Literature	24	Drama (W)	20	Economics	24
Film Studies	24	Geography	24	Further Maths (including Maths)	24	Economics	24	English Literature	24
French	24	Graphics BTEC Diploma **	24	Health & Social Care BTEC Diploma **	24	Further Maths (including Maths)	24	Graphics BTEC Diploma **	24
Further Maths (including Maths)	24	History	24	Law	24	Maths	24	Health & Social Care BTEC Diploma **	24
Maths	24	Maths	24	Maths	24	Physics	24	History	24
Philosophy	24	Psychology	24	Music (W)	24	Sociology	24	Maths	24
Politics	24	Sociology	24	Photography (W)	20			Physics	24
Sport BTEC Diploma **	24	Spanish	24	Physics	24			Psychology	24
				Psychology	24			Sport BTEC Diploma **	24
								Sport BTEC Extended Certificate	24
								Textiles (W)	24

Pathway Name	Subjects	Pathway Entry Criteria			Additional Subject Criteria
		GCSE Average Points Score English and Mathematics plus BEST 6	GCSE English	GCSE Mathematics	
Core Pathway 3 A Levels *	Computer Science, Further Mathematics	5	5	7	
	Science, Mathematics, Economics, Business	5	5	6	Biology – 5, 5 in Combined Science OR Triple Science APS of 5 with a minimum of 5 in Biology Chemistry – 5,5 in Combined Science OR Triple Science APS of 5 with a minimum of 5 in Chemistry Physics – 5, 5 in Combined Science OR Triple Science APS of 5 with a minimum of 5 in Physics
	Drama, English Literature, English Language & Literature (combined), Film Studies, French, Geography, History, Law, Music, Philosophy, Politics, Psychology, Sociology, Spanish, Textiles	5	5	4	Music – 5 in Music French – 5 in French Spanish – 5 in Spanish
	Art, Dance, Photography	4	4	4	Art – 5 in Art
Please be aware all BTEC subjects are Level 3 Diploma subjects and are equivalent to 2 subject choices, unless stated otherwise					
Mixed Pathway BTEC and A Level subjects **	Business & Marketing***, Creative Media, Engineering****, Graphics, Health & Social Care, Sports Studies	4	4	4	BTEC Engineering**** – GCSE Mathematics 5 and GCSE Science 5

* Note Further Mathematics will be selected with two other subjects which will be equivalent to 4 subjects.

** Entry criteria must have been met for the A Level subject over and above the BTEC.

*** Available as either a single BTEC (equivalent to 1 subject choice) or a double award subject.

**** Only available as a single award subject.

NB Sport BTEC Extended Certificate is only available in combination with Business BTEC Diploma. Please be aware students on this pathway will be committing to additional learning time. Sport BTEC Diploma is available in the usual combination on our mixed pathway.

We understand that every applicant will have a different experience and reserve the right to amend the above criteria in exceptional circumstances.

Cognitive Ability Tests (CAT)

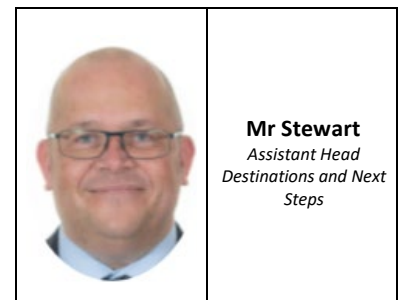
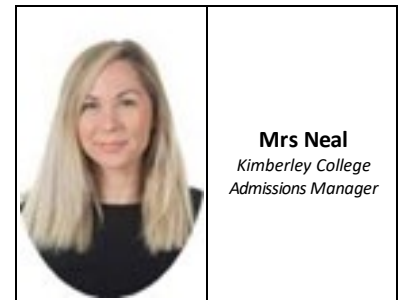
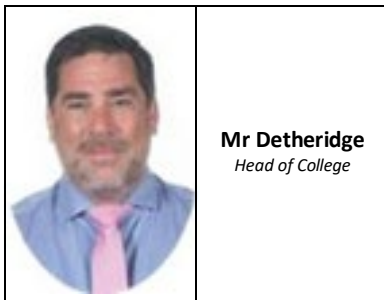
Applicants will only be made a conditional offer once the full application process has been completed. This year we require all applicants to have completed an online Cognitive Ability Test (CAT) before our conditional offers are made. These tests will be hosted at Kimberley College, and will take place in the week of 6th January 2025. The data from the CAT will assist the college in understanding the learning needs of each applicant and may assist us in discussions about appropriate subject combinations. We will also use the data to compliment final GCSE results in the summer when we enrol our new intake.

Dates for Your Diary

Deadline for application	Monday 2nd December
Cognitive ability test (CAT)	W/C Monday 6th January
Deadline for sending conditional offers	Wednesday 12th February
Deadline for acceptance or rejection of conditional offers	10 school days after offer sent
Parent/Carer Information Evening	Wednesday 25th June
Induction Day	Tuesday 1st or Wednesday 2nd July
GCSE results day and enrolment day	Thursday 21st August
Deadline to complete enrolment	10.00am Friday 22nd August

These dates are important to secure your place.

Key Staff



For More Information



Green Lane, Stewartby, Bedfordshire, MK43 9LY

01234 762890



www.kimberleycollege.co.uk

admissions@wootton.beds.sch.uk



facebook.com/KimberleySTEMCollege

twitter.com/STEMCollege

