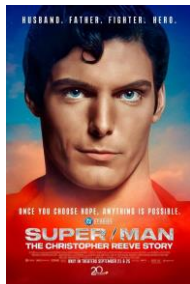




College Bulletin: W/C Mon 2nd & 9th Dec

INCLUSION FOCUS DOCUMENTARY:

Super/Man: The Christopher Reeve Story is a moving, inspiring documentary about the Superman star, whose spine was critically injured in a horse-riding accident in 1995, leaving him paralyzed from the neck down. It's about turning adversity into advantage (and a way to help others), as well as the value of family, courage, and communication.

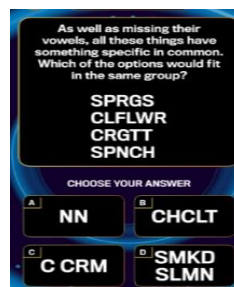


THOUGHT OF THE WEEK



1% Club Question of the day!

20%



ROLE MODEL OF THE FORTNIGHT



Adebayo Olayiwola "Ade" Adepitan MBE is a Nigerian-born British television presenter and wheelchair basketball player. He has hosted a range of travel documentaries and sports programmes for BBC television. He is a disability advocate and one of the first physically disabled television presenters in the UK, with a career of over 20 years.

WELLBEING SUPPORT

Bedford Borough Wellbeing Hub

https://localoffer.bedford.gov.uk/kb5/bedford/directory/site.page?id=R_ScQflCIWk

Mental Health & Anxiety

www.calmharm.co.uk www.clearfear.co.uk www.kooth.com

Gender Identity/Sexual Orientation

www.theproudtrust.org

Bereavement

www.cruse.org.uk www.winstonswish.org

Staying Safe Online

https://www.thinkuknow.co.uk/14_plus/

Eating Disorders

www.beateatingdisorders.org.uk

Substance Misuse Support

<https://aquarius.org.uk/>

REMINDER: Our Student Health Guide can be found here:

[Student Welfare](#) | [kimberleycollege](#)



KEY DATES/ REMINDERS:

Mon 2nd Dec: Annual Student Survey goes live (See slide 2)

Mon 2nd Dec: Volleyball Tournament at Wootton 3.30pm-5.30pm

Tues 3rd Dec: College UCAS Deadline

Wed 4th Dec: Ready2Lead Group assembly at Lake View School

Wed 4th Dec: Christmas in a Box Appeal Deadline

Thurs 5th Dec: Y13 Parent and Carer Evening 3.30-8.00pm online

Tues 10th Dec: Ready2Lead Celebration Event in the atrium 5-8.30pm

Tues 10th – Thurs 12th Dec: : We Will Rock You at Wootton 7pm

Thurs 12th Dec: Kimberley Christmas 12.45pm – 2.45pm (See slide 2)

Tues 17th Dec: Whole College Celebration assembly broadcast on Teams 9.30am

Wed 18th Dec: 'We Will Rock You' Y12 & Y13 students at Wootton Vale Assisted Living Home 1.30pm – 3pm

Fri 20th Dec: Last Day of term

TUESDAY 7th Jan 2025: Return to college

CELEBRATING THE STEPPING STONES TO SUCCESS

Outstanding Attitude to Learning

Y12: Mea C, Tristan G, Ollie F, Dominic R, Nick R & Camilla R

Y13: Isabelle H, Fraser E, Sarah M V & Oscar G

Excellent HW

Y12: Lola S & Amelie M

Y13: Krish P & Kadek O R



Enrichment

Well done to the H&SC Students who fully engaged and enjoyed a fantastic Grade-Booster exam workshop in London this week.

KEY COLLEGE CONTACT DETAILS

Safeguarding: safeguarding@wootton.beds.sch.uk

Pastoral: kimberleypastoral@wootton.beds.sch.uk

Attendance: 6formattendance@wootton.beds.sch.uk

Bursary: bursary@wootton.beds.sch.uk

ANONYMOUS RERPORTING SYSTEM: SELF-REFERRAL FOR SUPPORT:

<https://forms.office.com/r/ADxircgSWf>

<https://forms.office.com/e/hkK8RggG7g>

EQUALITY, DIVERSITY & INCLUSION CALENDAR:

December is Disability History Month

1st Dec: World Aids Day

3rd Dec: International Day of persons with disabilities

7th – 15th Dec: Hanukkah

10th Dec: Human Rights Day

25th Dec: Christmas Day



TUTOR SESSIONS in the Lecture Theatre

	Year 13	Year 12
(W1) w/c 02/12/24	Next Steps Focus & student survey	
(W2) w/c 25/11/24		Personal Safety & Student Survey

Annual Student Survey

Thank you for taking the time to complete this survey, this is your opportunity to voice your opinion, we value your ideas and feedback and will use the information provided to help improve your college experience.

<https://forms.office.com/e/UAcpxxEr6n>

DEADLINE: Friday 13th December



Kimberley Christmas – Thursday 12th Dec



We will be supporting – Save the Children Christmas Jumper Day, staff and students are encouraged to wear something 'Christmassy' (It doesn't have to be a Christmas Jumper) there will be a prize for the most 'Christmassy' dressed outfit! PLEASE

DONATE HERE: <https://www.justgiving.com/page/kimberley-college-part-of-wootton-academy-trust-1732651439134?newPage=true>

- Christmas Dinner will be served 12.45pm – 1.45pm (There will be a variety of options)
- The Media Christmas Show will be broadcast live to lessons: 1.45pm – 2.45pm

Student Focus – Punctuality



EVERY
MINUTE
COUNTS

As mentioned in the last college bulletin – we are having a focus on Student Punctuality over the next couple of weeks.

PLEASE NOTE THE FOLLOWING:

- Any student arriving after 8.30am for the AM lesson or after 11.30am for PM lesson will be asked to sign the late register in reception – **lates to AM & PM lesson will be recorded on ClassCharts**. (This will not include the students that arrive via train or shuttle bus).
 - If you have a genuine reason for being late – please communicate this with the reception team – but be aware – traffic is not an excuse!!!!
 - **Punctuality after break and lunch:** All students should be back in lessons by 10.10am / 10.30am or 1.40pm, any student who arrives after this time will be **recorded as late back from break/ lunch on ClassCharts**.
 - **Break & Lunch Time:** Students should use this time to go to the toilet / fill their water bottles etc – students SHOULD NOT go to the toilet at the end of break or lunch as this will make you late returning to your lesson!!
 - Students are responsible for monitoring the time to ensure that they are heading back to lessons 3 minutes before the end of break/ lunch.
 - **Directed Independent Study:** Reminder – every 3 lates to lesson / lates back from break or lunch will automatically generate an after college directed independent study for students on Thursdays.
- Every time we are asked to write a reference for a student, we are asked about their attendance and punctuality – employers want to recruit organised and punctual employees!!



Next Steps Information

UCAS

UNIVERSITY OF THE FORTNIGHT - Aston University



- Research led University known for world-class teaching quality & strong links to industry & government
- Located in the centre of Birmingham
- Ranked 21st in the UK (The Guardian University Guide 2025)
- Awarded University of the Year for Student Success (The Daily Mail University Guide 2025)
- Home to one of the leading brain imaging research facilities in the world – The Aston Brain Centre
- First University in the UK to have degree apprenticeship graduates

CAREERS / APPRENTICESHIPS

CAREER OF THE FORTNIGHT – Sport & Exercise Psychologist



Sport and exercise psychologists work with athletes, teams and coaches to improve their motivation and performance.

As a sport and exercise psychologist, you will:

- assess clients' needs to develop fitness plans and recommendations
- set up activities to improve team and individual performance
- advise coaches and managers on team communication
- support athletes in coping with injuries, confidence and motivation
- teach people psychological techniques to improve their wellbeing and performance

UNIVERSITY PATHWAY - FURTHER INFORMATION

What should I be doing now?

Year 13

- Complete University visits
- Congratulations on submitting your application! Please ensure you keep an eye on your emails as we will contact you to confirm several things before we send your applications
- Continue to monitor track to see if any offers have been made

Year 12

- Continue to research Universities
- Use Unifrog to research possible subjects & create lists of University options

Sport & Exercise Psychologist - FURTHER INFORMATION

How much can I earn?

The average salary ranges from £20,000 - £48,000.

What it takes -

You'll need:

- Counselling skills, including active listening & a non-judgemental approach
- Knowledge of psychology
- Sensitivity & understanding
- Excellent communication skills
- To enjoy working with other people

Entry requirements -

You'll need to complete a degree accredited by the British Psychological Society (BPS) or do a psychology conversion course. You'll usually need 3 A levels, or equivalent.

For more information - [Sport and exercise psychologist](#) | [Explore careers](#) | [National Careers Service](#)